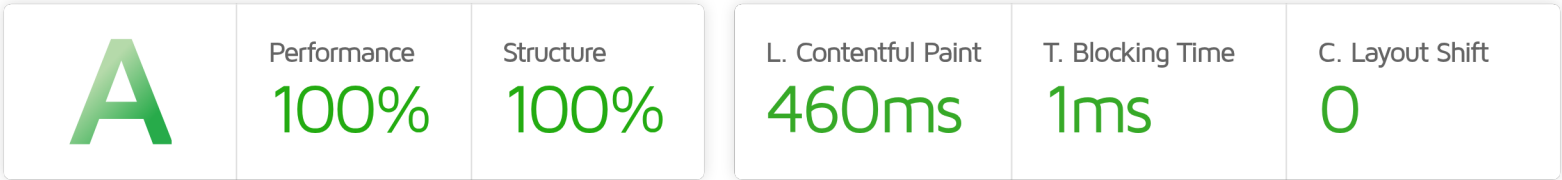




# Performance Report for: <https://axiontrade.com.br/>

Report generated: Thu, Apr 2, 2026 5:16 AM -0700  
 Test Server Location: São Paulo, Brazil  
 Using: Chrome 142.0.0.0, Lighthouse 12.6.1



## Top Issues

Low	<b>Avoid chaining critical requests</b> <small>LCP</small> <small>FCP</small>	36 chains found
Low	<b>Avoid an excessive DOM size</b> <small>TBT</small>	703 elements
Low	<b>Avoid long main-thread tasks</b> <small>TBT</small>	2 long tasks found
Low	<b>Avoid non-composited animations</b> <small>CLS</small>	5 animated elements found
Low	<b>Defer offscreen images</b>	Potential savings of 3.90KB

**Focus on these audits first**

These audits likely have the largest impact on your page performance.

Structure audits do not directly affect your Performance Score, but improving the audits seen here can help as a starting point for overall performance gains.

## Page Details



Total Page Size - 629KB



Total Page Requests - 54



## How does this affect me?

Modern web users have a short attention span and expect a fast and seamless website experience. Delivering that fast experience can result in more traffic, more conversions, and more happiness.

As if you didn't need more incentive, **Google use Page Speed and Page Experience (including Web Vitals) signals in their ranking algorithm.**

## About GTmetrix

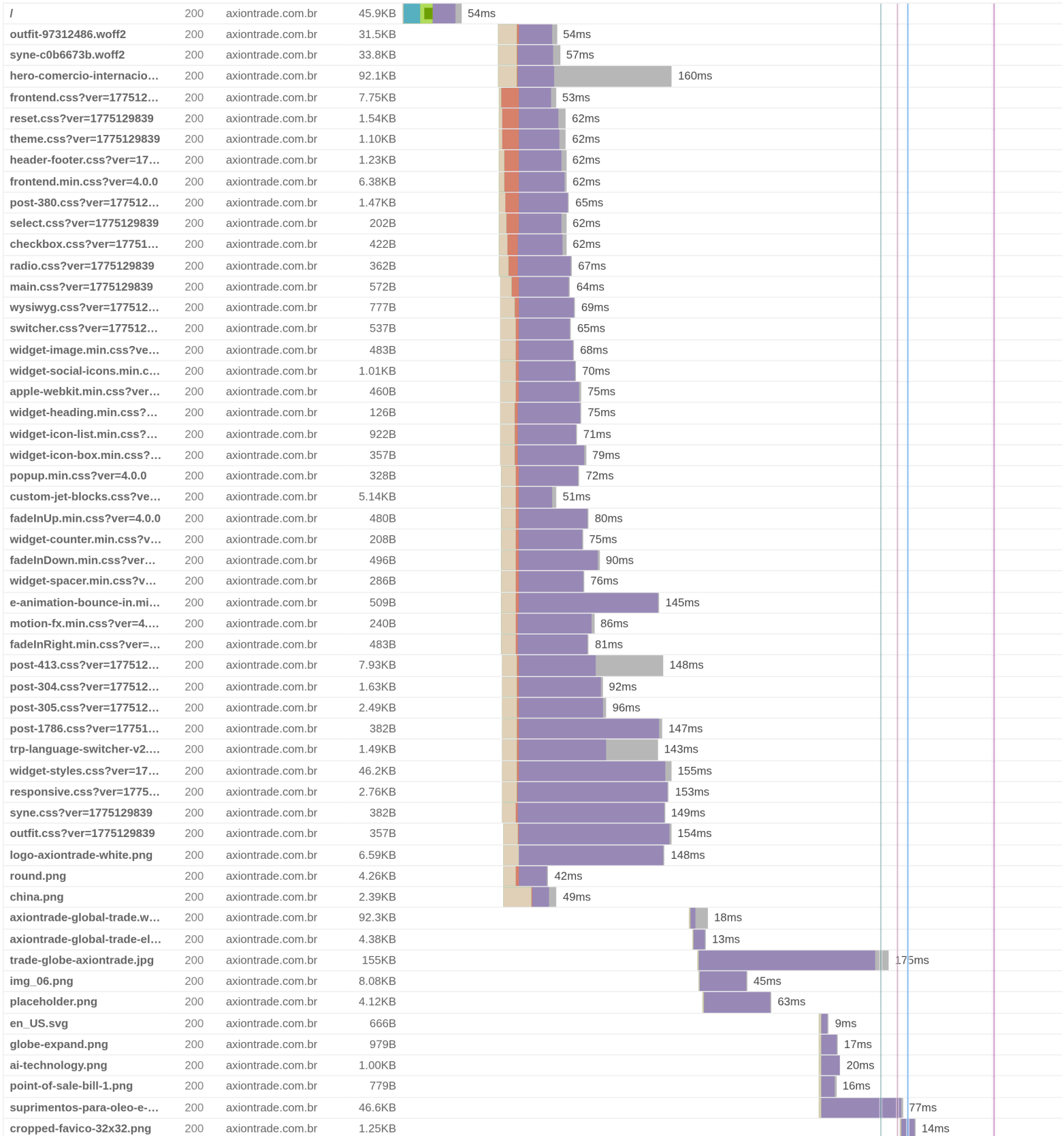


GTmetrix was developed as a tool for customers to easily test the performance of their webpages.

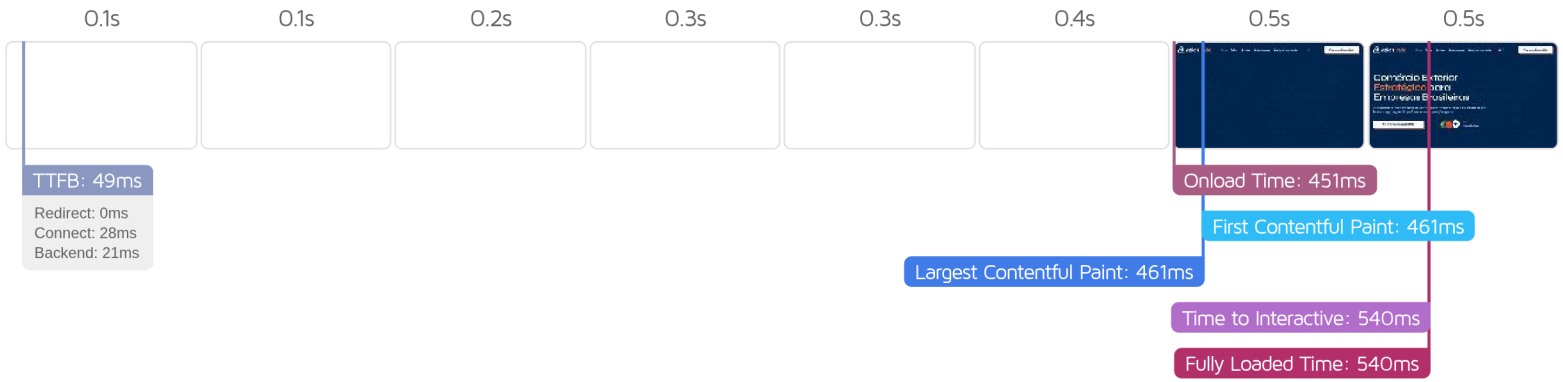
[Learn more about us.](#)

The waterfall chart displays the loading behaviour of your site in your selected browser. It can be used to discover simple issues such as 404's or more complex issues such as external resources blocking page rendering.

Comércio Exterior Estratégico | AxionTrade







Performance Metrics

<p><b>First Contentful Paint</b></p> <p>How quickly content like text or images are painted onto your page. A good user experience is 0.9s or less.</p>	<p>Good - Nothing to do here</p> <p><b>460ms</b></p>
<p><b>Speed Index</b></p> <p>How quickly the contents of your page are visibly populated. A good user experience is 1.3s or less.</p>	<p>Good - Nothing to do here</p> <p><b>570ms</b></p>
<p><b>Largest Contentful Paint</b></p> <p>How long it takes for the largest element of content (i.e., a hero image) to be painted on your page. A good user experience is 1.2s or less.</p>	<p>Good - Nothing to do here</p> <p><b>460ms</b></p>
<p><b>Time to Interactive</b></p> <p>How long it takes for your page to become fully interactive. A good user experience is 2.5s or less.</p>	<p>Good - Nothing to do here</p> <p><b>539ms</b></p>
<p><b>Total Blocking Time</b></p> <p>How much time is blocked by scripts during your page loading process. A good user experience is 150ms or less.</p>	<p>Good - Nothing to do here</p> <p><b>1ms</b></p>
<p><b>Cumulative Layout Shift</b></p> <p>How much your page's layout shifts as it loads. A good user experience is a score of 0.1 or less.</p>	<p>Good - Nothing to do here</p> <p><b>0</b></p>

Browser Timings

Redirect	0ms	Connect	28ms	Backend	21ms
TTFB	49ms	DOM Int.	413ms	DOM Loaded	436ms
Onload	451ms	First Paint	461ms	Fully Loaded	540ms

IMPACT	AUDIT	
LOW	<b>Avoid chaining critical requests</b> <small>FCP LCP</small>	36 chains found
LOW	<b>Avoid an excessive DOM size</b> <small>TBT</small>	703 elements
LOW	<b>Avoid long main-thread tasks</b> <small>TBT</small>	2 long tasks found
LOW	<b>Avoid non-composited animations</b> <small>CLS</small>	5 animated elements found
LOW	<b>Defer offscreen images</b>	Potential savings of 3.90KB
LOW	<b>Avoid enormous network payloads</b> <small>LCP</small>	Total size was 642KB
LOW	<b>Reduce unused CSS</b> <small>FCP LCP</small>	Potential savings of 45.8KB
LOW	<b>Properly size images</b>	Potential savings of 33.6KB
N/A	<b>Reduce JavaScript execution time</b> <small>TBT</small>	55ms spent executing JavaScript
N/A	<b>Largest Contentful Paint element</b> <small>LCP</small>	460 ms
N/A	<b>Minimize main-thread work</b> <small>TBT</small>	Main-thread busy for 441ms
N/A	<b>Eliminate render-blocking resources</b> <small>FCP LCP</small>	Potential savings of 0 ms
N/A	<b>Reduce initial server response time</b> <small>FCP LCP</small>	Root document took 20ms
N/A	<b>Reduce the impact of third-party code</b> <small>TBT</small>	Total size was 181B
N/A	<b>Avoid serving legacy JavaScript to modern browsers</b> <small>TBT</small>	
N/A	<b>User Timing marks and measures</b>	